

**HERE
TO 
STAY**



545 N. EXPRESSWAY
GRIFFIN, GA 30223



On March 17, 2019 City Church launched it's first Sunday Gathering at 545 N. Expressway with 300 people in attendance. Before City Church started meeting weekly in a shopping center, a small group of adults and families began meeting at a house in Jackson, GA believing that God would bring transformation to the city of Griffin.

**DO NOT DESPISE THESE SMALL BEGINNINGS FOR THE LORD REJOICES TO SEE THE WORK BEGIN
- ZECHARIAH 2:10 -**



OUR FUTURE HOME



220 E. SOLOMON ST
GRIFFIN, GA 30223

OUR FUTURE HOME

Our new building is located at 220 E Solomon St. in downtown Griffin. It is within a 1 mile radius of the most densely populated and diverse areas in our city.

God, in His sovereignty, made us aware of this building even though it was not on the market, and He miraculously provided a way for us to OWN the building.

We are committed to our vision of reaching the 20,000 people in our city that do not know Jesus or attend of local church. We are positioned to make a significant impact in our city. The story doesn't stop here; we know that this is just the beginning of what God wants to do in and through City Church.

Even in a season where the building has not been used for gatherings, God decided to use it in an incredible way. The birth of City Church was not a Sunday worship service but a through Distribution Center.

In a response to the devastation that was left behind in our city due to 5 tornadoes that ripped through Griffin on January 12, 2023, we opened up our future home to become the F.E.M.A. Regional Distribution Center for our county and surrounding counties.





1,000,000
LBS. OF SUPPLIES DONATED

2,000
VOLUNTEERS

14,000
PEOPLE SERVED



ANTOINETTE'S STORY

This is Antionette. Antionette's first experience with City Church was not through a Sunday Gathering, but through the distribution center. On January 12, 5 tornadoes hit the city of Griffin leaving many in our community without power, shelter, and so much more. The need was overwhelming, and although many had a desire to help, they did not know where to begin. Antoinette felt those same feelings, but knew she had to do something. She found an easy on ramp to serve through the distribution center. For multiple days she stood in front of the parking lot to direct traffic as people came in to drop off supplies. The interaction and camaraderie that she experienced while serving along other city builders led her to visit City Church that next Sunday. In her words, "They welcomed me with open arms. City Church felt like home." Shortly after visiting, she felt that God was leading her to take her next step in baptism. She kept attending and started praying about taking her next step. On March 26, Antoinette was baptized. She didn't stop at the step. In her words, " You can't play sitting on the sidelines so I made a conscious and intentional decision to get in the game. Service connects me with people, and I LOVE PEOPLE! City Church redeemed my faith in the 'church'."

We say often...

"When you give, you don't just give to City Church, you give through City Church."

-  **Over 100,000 Free Ice Creams Given**
-  **600 Kids and Families served through Spalding United Youth Basketball (The Recreation League that we provide through Spalding County to kids ages 5-12 years old)**
-  **30 Movie in the Parks**
A free family event in downtown Griffin right next door to our new building.
-  **Over \$200,000 invested back into our city**
Through investing in local businesses, schools & teachers, and other ministries and organizations making a difference.

THESE OPPORTUNITIES HAVE LED TO

125 BAPTISMS

OUR CHALLENGES

THE VISION OF CITY CHURCH HAS BEEN CARRIED OUT AT 545 N. EXPRESSWAY (OUR CURRENT LOCATION) FOR THE PAST FOUR YEARS BUT WE ARE QUICKLY REACHING OUR LIMITATIONS WHICH IS CONSEQUENTLY CREATING A LID FOR FUTURE GROWTH. HERE ARE SOME AREAS THAT WE ARE FACING CHALLENGES IN:



We value the next generation. We are experiencing fantastic growth but are quickly running out of space for City Kids (Birth through 5th Grade) on Sunday mornings.



While our current location has been a blessing, we are continuing to see the cost of renting (leasing) rise.



We have renovated our current location to maximize the space, and with our current growth, we have run out of room to accommodate people on Sunday morning.



Our current location cannot support the vision that we have to further add value to our city through creating opportunities for development for leaders in our city. We do not have the space to offer classes during the week.

OUR OPPORTUNITY

We now have the opportunity to carry out the vision of City Church in the heart of our city. Our new building is situated in the most densely populated and diverse parts of our city. We have made our presence known through events like Movie in the Park. Now we have to opportunity for our full time home base and sending place to be in the same area. We believe that this will widen our impact and, more importantly, further communicate the Gospel by showing our city what the staying power of presence looks like. We are...

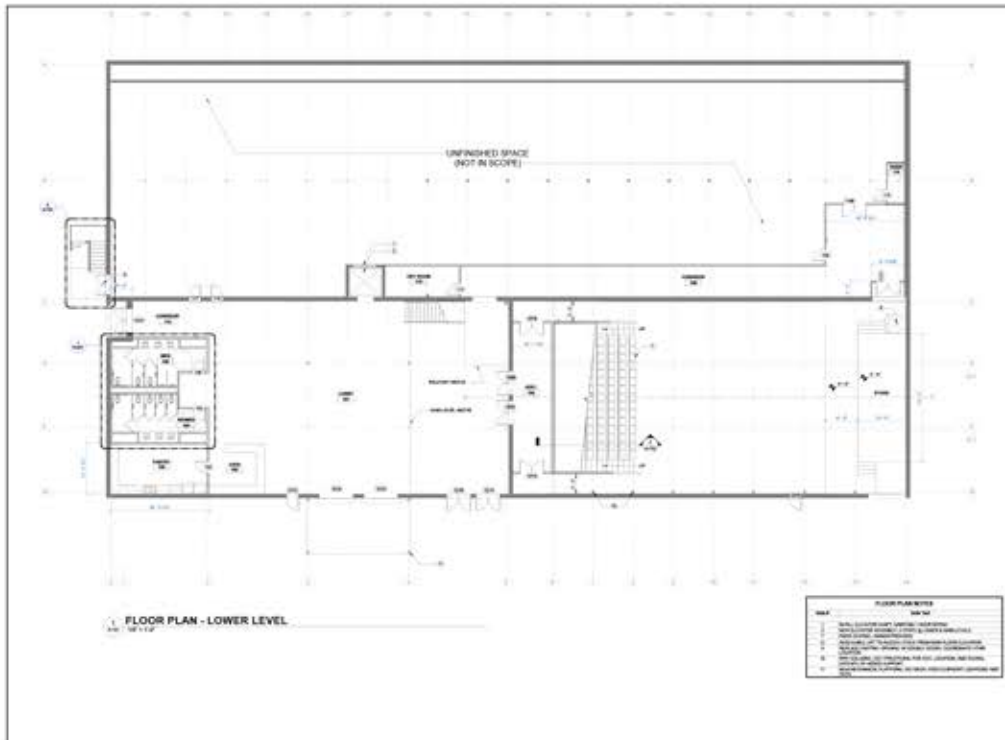
HERE
TO 
STAY

PHASE 1

18,000 SQ. FT.

400 SEAT AUDITORIUM

LOBBY, KIDS, AND PRESCHOOL SPACES



FLOOR PLAN - LOWER LEVEL

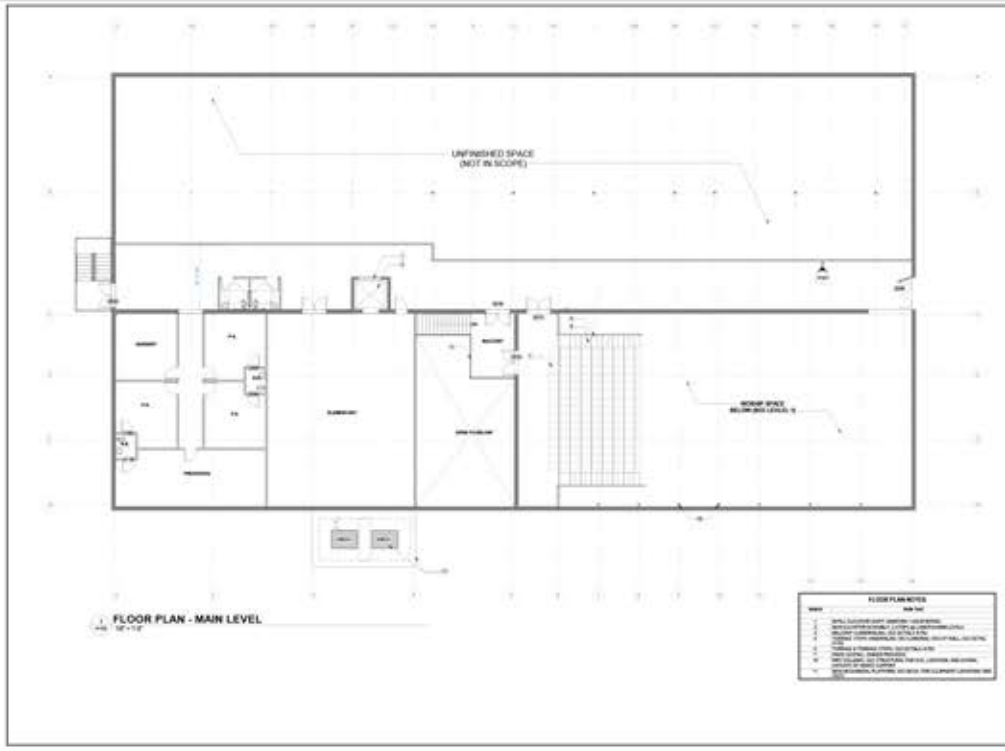
FLOOR PLAN NOTES	
1.	SEE GENERAL NOTES AND SPECIFICATIONS
2.	SEE ARCHITECTURAL RECORDS FOR PREVIOUS WORK
3.	SEE MECHANICAL, ELECTRICAL AND PLUMBING (MEP) DRAWINGS FOR DETAILS
4.	SEE STRUCTURAL DRAWINGS FOR COLUMN AND BEAM LOCATIONS
5.	SEE FINISH SCHEDULE FOR MATERIALS AND COLORS
6.	SEE SCHEDULE OF FINISHES FOR MATERIALS AND COLORS
7.	SEE SCHEDULE OF EQUIPMENT FOR MATERIALS AND COLORS
8.	SEE SCHEDULE OF FURNITURE FOR MATERIALS AND COLORS
9.	SEE SCHEDULE OF LIGHTING FOR MATERIALS AND COLORS
10.	SEE SCHEDULE OF PAINTS FOR MATERIALS AND COLORS



CITY CHURCH GRIFFIN
220 EAST SOLOMON STREET
GRIFFIN, GEORGIA



FLOOR PLAN - LOWER LEVEL
DATE: 08/11/17
BY: [Signature]
A-101



FLOOR PLAN - MAIN LEVEL

FLOOR PLAN NOTES	
1.	SEE GENERAL NOTES AND SPECIFICATIONS
2.	SEE ARCHITECTURAL RECORDS FOR PREVIOUS WORK
3.	SEE MECHANICAL, ELECTRICAL AND PLUMBING (MEP) DRAWINGS FOR DETAILS
4.	SEE STRUCTURAL DRAWINGS FOR COLUMN AND BEAM LOCATIONS
5.	SEE FINISH SCHEDULE FOR MATERIALS AND COLORS
6.	SEE SCHEDULE OF FINISHES FOR MATERIALS AND COLORS
7.	SEE SCHEDULE OF EQUIPMENT FOR MATERIALS AND COLORS
8.	SEE SCHEDULE OF FURNITURE FOR MATERIALS AND COLORS
9.	SEE SCHEDULE OF LIGHTING FOR MATERIALS AND COLORS
10.	SEE SCHEDULE OF PAINTS FOR MATERIALS AND COLORS



CITY CHURCH GRIFFIN
220 EAST SOLOMON STREET
GRIFFIN, GEORGIA



FLOOR PLAN - MAIN LEVEL
DATE: 08/11/17
BY: [Signature]
A-102

THE NEED

We have a building, but it requires renovation to be used for our ministry, vision, and goals. We have set our renovation budget at **\$1.2M**, giving us the ability to transform the space into the future home that will serve our city and be a sending place for our people.

After analyzing our finances we believe that these funds can be raised over the next 2 years so that we can move forward, move in, and continue to be a Jesus movement that is for our city. Our ask is that you would take a step or multiple steps towards greater generosity.

THE GOAL

\$1,2000,000
IN 2 YEARS



THE PATHWAY

TAKE YOUR
NEXT STEP
IN
GENEROSITY



YOUR NEXT STEP IN GENEROSITY

WE HAVE IDENTIFIED DIFFERENT OPTIONS FOR YOU TO TAKE A STEP TOWARDS GREATER GENEROSITY. OUR ASK IS THAT YOU WOULD TAKE A STEP OR MULTIPLE STEPS TOWARDS GREATER GENEROSITY.

ONE TIME GIFT

You may not be a part of the City Church family, but you believe in what we are doing as a church, and you would like to give a one time financial gift towards Here To Stay.

MONTHLY GIFT

You may not be a part of the City Church family, but you believe in what we are doing as a church, and you would like to make a monthly commitment to Here To Stay over the next 12 months..

ONE TIME GIFT ABOVE & BEYOND

City Church is your home church, and you want to make a one time financial gift to Here To Stay. You are already giving consistently on a weekly/monthly, and this gift is above and beyond that regular giving

MONTHLY GIFT ABOVE & BEYOND

City Church is your home church, and you want to make a 12 month financial commitment to Here To Stay. You are already giving consistently on a weekly/monthly, and this gift is above and beyond that regular giving



GIVING POTENTIAL

MONTHLY GIFT	12 MONTH TOTAL
\$25	\$300
\$75	\$900
\$100	\$1,200
\$200	\$2,400
\$300	\$3,600
\$500	\$6,000
\$750	\$9,000
\$1000	\$12,000
\$5000	\$60,000
\$10,000	\$120,000

HOWEVER YOU CHOOSE TO GIVE
THANK YOU!

MAKE YOUR COMMITMENT

1) PRAY ABOUT YOUR COMMITMENT

2) GET A COMMITMENT CARD FROM THE LOBBY DISPLAY ON SUNDAY OR USE THE CARD BELOW TO FILL OUT YOUR COMMITMENT.

3) TURN IN YOUR CARD ON A SUNDAY OR MAIL TO:
1545 N. EXPRESSWAY STE 336 GRIFFIN, GA 30224

GIVE ONLINE AT :

WWW.HERETOSTAY.CC/GIVE

NAME

EMAIL

PHONE

**HERE
TO
STAY**

THANK YOU FOR PRAYERFULLY CONSIDERING INVESTING IN ETERNITY THROUGH CITY CHURCH. AS PART OF MAKING A 12 MONTH COMMITMENT ABOVE AND BEYOND YOUR NORMAL GENEROSITY, PLEASE LET US KNOW THE FREQUENCY AND AMOUNT PER GIFT SO WE CAN PLAN ACCORDINGLY.

PLEASE LET US KNOW YOUR TOTAL COMMITMENT TO **HERE TO STAY** AND THE FREQUENCY IN WHICH YOU PLAN TO GIVE.

MY 1 YEAR TOTAL COMMITMENT

\$

MY PLAN TO FULFILL THIS IS

WEEKLY

\$

MONTHLY

\$

ONE FULL PAYMENT ON

DATE

HERETOSTAY.CC

HERE TO STAY



www.heretostay.cc
info@citychurchgriffin.org
1545 N. Expressway Griffin, GA 30223